

Identification of human-induced changes in atmospheric moisture content

B. D. Santer^{a,b}, C. Mears^c, F. J. Wentz^c, K. E. Taylor^a, P. J. Gleckler^a, T. M. L. Wigley^d, T. P. Barnett^e, J. S. Boyle^a, W. Brüggemann^f, N. P. Gillett^g, S. A. Klein^a, G. A. Meehl^d, T. Nozawa^h, D. W. Pierce^e, P. A. Stottⁱ, W. M. Washington^d, and M. F. Wehner^j

^aProgram for Climate Model Diagnosis and Intercomparison, Lawrence Livermore National Laboratory, Livermore, CA 94550; ^bRemote Sensing Systems, Santa Rosa, CA 95401; ^cNational Center for Atmospheric Research, Boulder, CO 80307; ^dScripps Institution of Oceanography, La Jolla, CA 92037; ^eInstitut für Unternehmensforschung, Universität Hamburg, 20146 Hamburg, Germany; ^fClimatic Research Unit, School of Environmental Sciences, University of East Anglia, Norwich NR4 7TJ, United Kingdom; ^gNational Institute for Environmental Studies, Tsukuba 305-8506, Japan; ^hHadley Centre for Climate Prediction and Research, United Kingdom Meteorological Office, Exeter EX1 3PB, United Kingdom; and ⁱLawrence Berkeley National Laboratory, Berkeley, CA 94720

Edited by Inez Y. Fung, University of California, Berkeley, CA, and approved July 27, 2007 (received for review March 27, 2007)

Data from the satellite-based Special Sensor Microwave Imager (SSM/I) show that the total atmospheric moisture content over oceans has increased by 0.41 kg/m² per decade since 1988. Results from current climate models indicate that water vapor increases of this magnitude cannot be explained by climate noise alone. In a formal detection and attribution analysis using the pooled results from 22 different climate models, the simulated “fingerprint” pattern of anthropogenically caused changes in water vapor is identifiable with high statistical confidence in the SSM/I data. Experiments in which forcing factors are varied individually suggest that this fingerprint “match” is primarily due to human-caused increases in greenhouse gases and not to solar forcing or recovery from the eruption of Mount Pinatubo. Our findings provide preliminary evidence of an emerging anthropogenic signal in the moisture content of earth’s atmosphere.

climate change | climate modeling | detection and attribution | water vapor

Fingerprint studies, which seek to identify the causes of recent climate change, involve rigorous statistical comparisons of modeled and observed climate change patterns (1). Such work has been influential in shaping the “discernible human influence” conclusions of national and international scientific assessments (2–4). Most fingerprint studies have focused on temperature changes at the earth’s surface (5, 6), in the free atmosphere (7, 8), or in the oceans (9), or have considered variables whose behavior is directly related to changes in atmospheric temperature (10).

Despite a growing body of empirical evidence documenting increases in moisture-related variables (11, 12), and climate model evidence of a number of robust hydrological responses to global warming (13, 14), there have been no formal fingerprint studies involving changes in the total amount of atmospheric water vapor, W . Other aspects of moisture changes have received attention in recent fingerprint work, with identification of an anthropogenic signal in observed records of continental river runoff (15), zonal mean rainfall (16), and surface specific humidity (17).

Warming induced by human-caused changes in well mixed greenhouse gases (GHGs) should increase W (11, 12). Under the assumption that relative humidity remains approximately constant, for which there is considerable empirical support (13, 18, 19), the increase in W is estimated to be ≈ 6.0 – 7.5% per degree Celsius warming of the lower troposphere (13, 18). The observed increase in W over the global ocean, as inferred since late 1987 from microwave radiometry measurements made with the satellite-borne Special Sensor Microwave Imager (SSM/I), is broadly consistent with theory (12, 18, 20).

Observational and Model Data

The SSM/I atmospheric moisture retrievals are based on measurements of microwave emissions from the 22-GHz water vapor

absorption line. The distinctive shape of this line provides robust retrievals that are less problematic than other types of satellite measurement. For example, the signal-to-noise ratio (S/N) for detecting moistening in the lower troposphere by a measurement of water vapor is several times larger than for measurements of air temperature obtained directly from the Microwave Sounding Unit (18). Because SSM/I moisture retrievals are unavailable over the highly emissive land surface (18), our focus is on the total column water vapor over oceans, W_o , for a near-global domain.

Here, we attempt to identify in the relatively short SSM/I record the spatial pattern of human-caused changes in W_o . Before performing formal pattern comparisons, we analyze trends in $\langle W_o \rangle$, the spatial average of W_o (the brackets denote a spatial mean).^k We examine whether model estimates of internal climate “noise,” obtained from control integrations with no forcing changes, can explain the observed $\langle W_o \rangle$ increase over 1988–2006. We also consider whether the observed high-frequency variability of $\langle W_o \rangle$ is reliably captured in 20th century (20CEN) simulations with historical changes in external forcings.

We use control and 20CEN results from 22 climate models. Model results are from the World Climate Research Program’s Coupled Model Intercomparison Project (CMIP-3) archive of simulations. The external forcings imposed in the 20CEN experiments differed between modeling groups. The most comprehensive experiments included changes in both natural external forcings (solar irradiance and volcanic dust loadings in the atmosphere) and a wide variety of anthropogenic influences (such as well mixed GHGs, ozone, sulfate and black carbon aerosols, and land surface properties). Details of the models, 20CEN experiments, and control integrations are given in [supporting information \(SI\) Text](#).

Author contributions: B.D.S., K.E.T., T.M.L.W., T.P.B., S.A.K., and D.W.P. designed research; B.D.S., K.E.T., P.J.G., J.S.B., and P.A.S. performed research; C.M., F.J.W., K.E.T., T.M.L.W., W.B., and N.P.G. contributed new reagents/analytic tools; B.D.S., P.J.G., and M.F.W. analyzed data; and B.D.S., C.M., F.J.W., K.E.T., P.J.G., T.M.L.W., T.P.B., J.S.B., W.B., N.P.G., S.A.K., G.A.M., T.N., D.W.P., P.A.S., W.M.W., and M.F.W. wrote the paper.

The authors declare no conflict of interest.

This article is a PNAS Direct Submission.

Freely available online through the PNAS open access option.

Abbreviations: CMIP, Coupled Model Intercomparison Project; EOF, empirical orthogonal function; GHG, greenhouse gas; S/N, signal-to-noise ratio; SSM/I, Special Sensor Microwave Imager; SST, sea surface temperature.

^bTo whom correspondence should be addressed. E-mail: santer1@llnl.gov.

^kThe domain for spatial averaging was 50°N–50°S. This domain was chosen to minimize the effect of model-vs.-SSM/I water vapor differences associated with inaccurate simulation of the latitudinal extent of ice margins. All data points over land were masked out before calculation of spatial averages. Averages were area-weighted, properly accounting for both complete and fractional grid-cells within the region.

This article contains supporting information online at www.pnas.org/cgi/content/full/0702872104/DC1.

© 2007 by The National Academy of Sciences of the USA

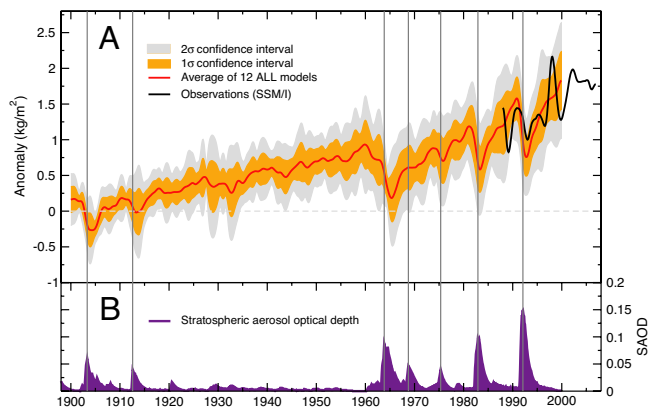


Fig. 1. Anomaly time series of monthly mean $\langle W_o \rangle$, the spatial average of total atmospheric moisture over near-global (50°N–50°S) oceans (A) and an estimate of the stratospheric aerosol optical depth (SAOD) (21) (B). Observations of $\langle W_o \rangle$ are from the SSM/I data set (20). Simulated $\langle W_o \rangle$ data are from 49 realizations of 20th century climate change that included combined anthropogenic and natural external forcing (ALL), performed with 12 different models. Model results were averaged over realizations and models (see footnote 1). Both model and observational data were smoothed by using a filter with a half-power point at ≈ 2 years (see SI Text). The yellow and gray envelopes are the 1 σ and 2 σ confidence intervals (respectively) for the multimodel average, calculated at each time t with a sample size $n = 12$. Most of the 20CEN experiments end in December 1999, and the multimodel average is displayed until that month only. All model anomalies were defined relative to climatological monthly means over 1900–1909. The choice of reference period has no impact on subsequent trend analyses or variability estimates. SSM/I anomalies were forced to have the same mean as the ALL average over the period of overlap between the simulated and observed time series (1988–1999). Note that the amplitude of $\langle W_o \rangle$ variability is not directly comparable in the observations and ALL model average because the latter was damped by averaging over different realizations and models. Vertical lines denote the times of maximum SAOD after major volcanic eruptions.

Observational and Modeled Water Vapor Time Series

The model 20CEN runs yield overall increases in $\langle W_o \rangle$ in response to the imposed external forcings (Fig. 1). We discuss runs that include anthropogenic forcing only (ANTHRO) and runs with combined forcing by both human influences and natural external factors (ALL).¹ The inclusion of volcanic effects in the ALL runs leads to slightly smaller $\langle W_o \rangle$ increases over the 20th century^m and causes pronounced decreases in $\langle W_o \rangle$ for several years after major eruptions (21). Such decreases are consistent with volcanically induced cooling of sea surface temperatures (SSTs) and with the strong coupling of interannual fluctuations in tropical SSTs and water vapor (18, 22–24).

¹Ensembles of the 20CEN simulations were performed with 15 of the 22 models analyzed here (see SI Text). Each ensemble contains multiple realizations of the same experiment, differing only in their initial conditions but with identical changes in external forcings. This approach yields many different realizations of the climate “signal” (the response to the imposed forcing changes) plus climate noise. Averaging over multiple realizations reduces noise and facilitates signal estimation. Here, we calculate averages over ALL and ANTHRO 20CEN runs. In each case, \bar{x} is the arithmetic mean of the individual model results, i.e., $\bar{x} = 1/N \sum_{j=1}^N \bar{x}_j$, where N is the total number of ALL or ANTHRO models (12 and 10, respectively) and \bar{x}_j is the ensemble mean signal (or individual realization) of the j th model. This averaging method avoids undue emphasis on results from a single model with a large number of realizations.

^mThe total changes in $\langle W_o \rangle$ over 1900–1999 are 1.37 kg/m² and 1.52 kg/m² for the ALL and ANTHRO models, respectively. These represent increases of 4.8% and 5.2% relative to the ALL and ANTHRO model climatological annual mean values of $\langle W_o \rangle$ over 1900–1909. Changes are defined as $b \times n$, where b is the slope parameter of the linear trend (in kilograms per square meter per month) fitted by the standard least-squares method over a specified period of n months. Note that $\langle W_o \rangle$ is sometimes expressed in millimeters (12). The conversion factor between kilograms per square meter and millimeters is 1.

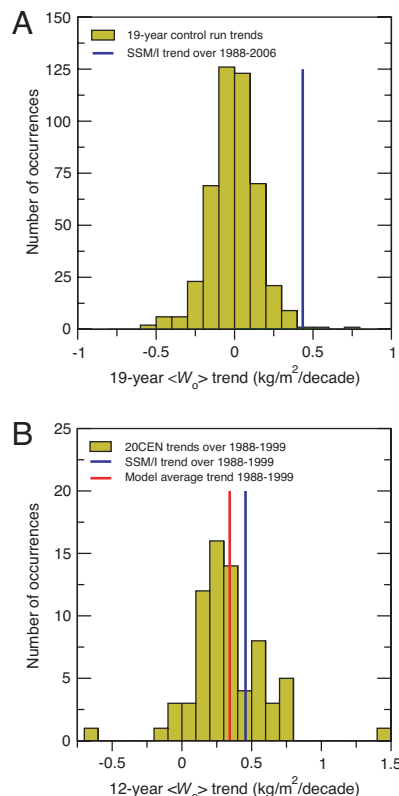


Fig. 2. Comparison of observed $\langle W_o \rangle$ trends with model simulations of unforced (A) and externally forced (B) trends. The sampling distribution of unforced 19-year trends was calculated as described in the text. Residual control run drift was not subtracted before estimation of the trend sampling distribution, thus inflating the standard error of the distribution and making it more difficult to reject the null hypothesis that internal variability alone could explain the observed trend. Forced $\langle W_o \rangle$ trends over 1988–1999 were estimated from 71 realizations of the 20CEN experiment performed with 22 models (see SI Tables 2 and 3). The SSM/I trend over 1988–1999 is larger than the mean of the model distribution of forced trends, in part because of the effects of the large observed El Niño event in 1997/1998 (Fig. 1A), which is close to the end of the trend period used in B.

In the SSM/I data, $\langle W_o \rangle$ increases over the period 1988–2006 by 0.41 kg/m² per decade, with a 95% confidence interval of ± 0.21 kg/m² per decade (20). This trend is significantly different from zero (12). As in the ALL models, $\langle W_o \rangle$ decreases for several years after the eruption of Mount Pinatubo in June 1991 (Fig. 1). The observed post-Pinatubo decrease is partly masked by the effect of a small El Niño event in 1992 and is therefore smaller than in the ALL model average.

Comparison of Observed and Unforced Water Vapor Trends

The “masking” described above illustrates a fundamental problem: observed climate changes represent a complex mixture of internally generated noise and responses to external forcing, and unambiguous separation of the two is difficult. Even if such separation were feasible, the short (19-year) SSM/I record provides only one sample of multidecadal noise. In contrast, climate models can provide multiple estimates of “pure” internally generated variability. The 22 model control runs analyzed here comprise a total of 8,848 years of data, and they yield 459 independent samples of the unforced variability of $\langle W_o \rangle$ on time scales of 19 years. This is the information we use to determine whether the SSM/I $\langle W_o \rangle$ trend over 1988–2006 could be due to noise alone.

To address this question, we calculate $\langle W_o \rangle$ from each model control run, fit linear trends to 19-year nonoverlapping segments of

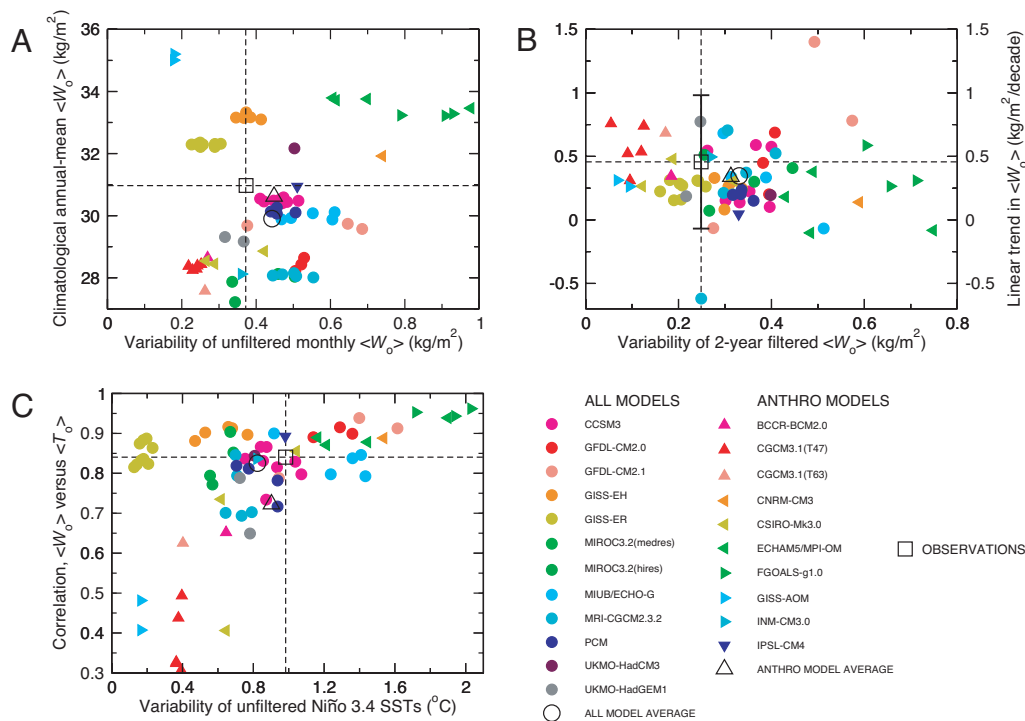


Fig. 3. Comparison of basic statistical properties of simulated and observed means, variability, and trends for atmospheric moisture over near-global oceans. Scatterplots show the relationships between the temporal standard deviation of unfiltered $\langle W_o \rangle$ anomalies and climatological annual mean $\langle W_o \rangle$ (A), the temporal standard deviation of 2-year filtered $\langle W_o \rangle$ anomalies (see *SI Text*) and linear trends in $\langle W_o \rangle$ over 1988–1999 (B), and the standard deviation of SST anomalies in the Niño 3.4 region (12) and the temporal correlation between anomalies of $\langle W_o \rangle$ and $\langle T_o \rangle$ (where $\langle T_o \rangle$ is the spatially averaged SST anomaly over 50°N–50°S) (C). Model results are individual 20CEN realizations and are partitioned into ALL and ANTHRO models (circles and triangles, respectively). Observations are from SSM/I for $\langle W_o \rangle$ and from version 2 of the Extended Reconstructed SST (ERSST) data set of the National Oceanic and Atmospheric Administration (NOAA) for $\langle T_o \rangle$ (25). All calculations involve monthly mean, spatially averaged anomaly data for the period January 1988 through December 1999, with anomalies expressed relative to climatological monthly means over this period. Standard deviations and correlations were estimated from linearly detrended data. The dashed horizontal and vertical lines in A–C are at the locations of the SSM/I values (SSM/I and ERSST in C) and facilitate visual comparison of the modeled and observed results. The error bars on the observed $\langle W_o \rangle$ trend in B are the 2σ trend confidence intervals, adjusted for temporal autocorrelation effects (see *SI Text*).

the $\langle W_o \rangle$ time series, and then pool results from the 22 models to form a multimodel distribution of unforced trends (Fig. 2A). If these noise estimates are reliable, internal variability is highly unlikely to be the sole cause of the observed increase in $\langle W_o \rangle$ over the SSM/I period: <1% (3 of 459) of the unforced trends in $\langle W_o \rangle$ exceed the observed trend over 1988–2006. When model experiments include estimates of anthropogenic and natural external forcings, the observed $\langle W_o \rangle$ trend of 0.46 kg/m² per decade over 1988–1999 (the period of overlap between the SSM/I record and the majority of the model 20CEN experiments) is not significantly different from the mean trend of 0.34 kg/m² per decade in the model 20CEN results (Fig. 2B).

Model Performance in Simulating Variability

The credibility of these results depends on the reliability of model noise estimates, particularly on multidecadal time scales. This is difficult to assess given the short observational record length and the large uncertainties inherent in partitioning that record into signal and noise components. The SSM/I data are of adequate length, however, to evaluate model performance in simulating the observed month-to-month and year-to-year $\langle W_o \rangle$ variability.

On both monthly and interannual time scales, the average temporal standard deviations of $\langle W_o \rangle$ for the ALL and ANTHRO models are actually slightly larger than the observed values (Fig. 3A and B). Furthermore, we find no indication that the models systematically underestimate either the variability of SSTs in the Niño 3.4 region (25) or the strength of the coupling between SST and $\langle W_o \rangle$ fluctuations (Fig. 3C).^a These results enhance our con-

fidence in the ability of models to capture some of the basic physics necessary for reliable simulation of the multidecadal noise relevant to our detection study.

Fingerprint Identification

Most formal detection and attribution (D&A) work has been performed in a “single-model” framework, where one or at most two models are used to estimate both the climate response to an imposed forcing change (the fingerprint) and the background noise of internal variability (5–10). The multimodel CMIP-3 archive offers unique opportunities and challenges for D&A research. A key opportunity is that the archive contains information from models with different resolution, physics, parameterizations, and forcings, enabling analysts to assess the robustness of D&A results. A key challenge is how best to exploit this wealth of information. Implementation of a single-model approach with 22 individual models and many different processing options (10) would generate a very large matrix of results.

A more elegant approach (26), which we follow here, is to estimate the fingerprint and noise by pooling information from multiple models. We use a standard optimal detection method (1) that has been applied successfully in studies of other climate variables (5, 10). All such methods seek to optimize the fingerprint

^aNote that Fig. 3 shows weak evidence of a relationship between the mean state and temporal variability of $\langle W_o \rangle$ (Fig. 3A) and stronger evidence that higher-amplitude variability of Niño 3.4 SSTs leads to greater coherence between SST and $\langle W_o \rangle$ fluctuations (Fig. 3C). The observed values of these quantities are reasonably well captured by the ALL and ANTHRO model averages. The model averages are also close to the observed climatological mean $\langle W_o \rangle$ and to the SSM/I water vapor trend over 1988 to 1999 (Fig. 3A and B).

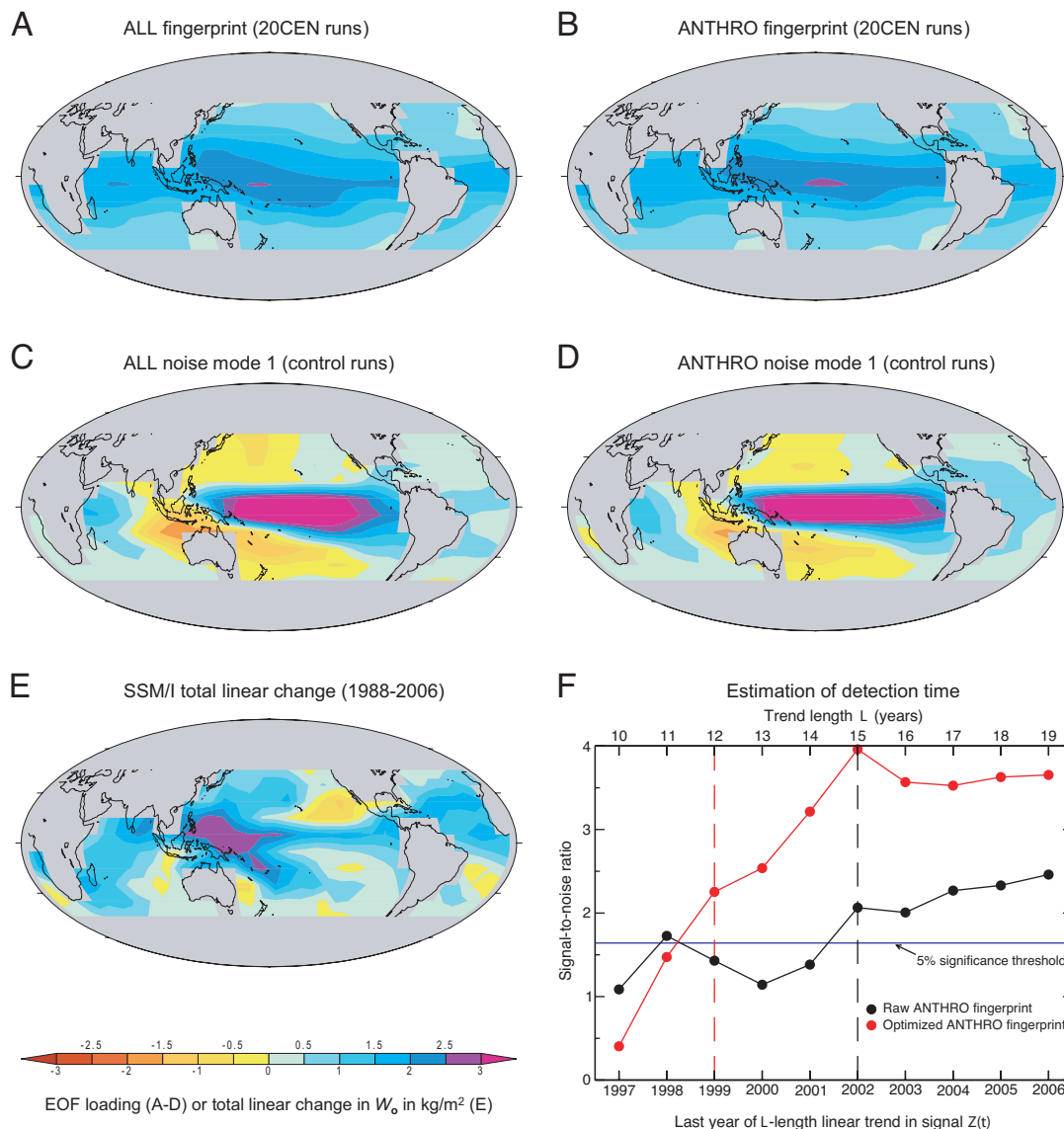


Fig. 4. Simulated and observed spatial patterns of changes in W_0 and estimation of detection time (10). Multimodel averages of the 20th century changes in W_0 were used to calculate the ALL (A) and ANTHRO (B) fingerprints we search for in the observations. Also shown are the leading noise modes of the concatenated ALL (C) and ANTHRO (D) model control runs and the observed pattern of total linear changes in W_0 over 1998–2006 (E). All calculations were performed on the common $10^\circ \times 10^\circ$ latitude/longitude grid used for the fingerprint analysis. The method used for estimation of detection time (F) is illustrated for one specific example, in which W_0 changes from both SSM/I data and the concatenated ANTHRO model control runs were projected onto the ANTHRO model fingerprint patterns. We fit trends of increasing length L to the resulting “signal” and “noise” projection time series, $Z(t)$ and $N(t)$, respectively; form a trend S/N as described in SI Text; and then determine the time at which this ratio exceeds and remains above a stipulated 5% significance threshold. This is the detection time. The dashed vertical lines denote the detection times for the raw and optimized fingerprints (1999 and 2002, respectively). In this example, data from the concatenated ALL model control runs were used for fingerprint optimization.

relative to the noise and to enhance detectability of the fingerprint in observations (1). Optimization is often performed by using information on both the spatial and temporal behavior of signal and noise (6, 9, 15–17, 26). Here, given the short length of the SSM/I record, there is little low-frequency structure to estimate, and we apply spatial optimization only. We also consider whether the model fingerprints are identifiable without any optimization.

We employ two sets of moisture fingerprints, estimated separately from the ALL and ANTHRO 20CEN runs (see SI Text). The fingerprints are the leading empirical orthogonal functions (EOFs) of the atmospheric moisture changes over 1900–1999 in the ALL and ANTHRO multimodel averages. Use of W_0 data for the entire 20th century (rather than simply for the period of overlap with SSM/I) provides a less noisy estimate of the true W_0 response to

slowly varying external forcings. It also provides a response that is more similar across models (see SI Fig. 6).

The ALL and ANTHRO fingerprint patterns are very similar, and primarily reflect the large mean changes in W_0 over the 20th century (Fig. 4A and B). In both fingerprints, W_0 increases over the entire domain and varies smoothly along bands of latitude, with the largest increases close to the equator and the smallest increases toward the extratropics. The single realization of observed W_0 changes over the short SSM/I period is noisier than the model fingerprints, but it also shows coherent increases in W_0 over most of the world’s oceans, with the largest increases occurring in the western equatorial Pacific (Fig. 4E).

The leading noise modes have similar structure in the ALL and ANTHRO model control runs (Fig. 4C and D) and primarily

Table 1. Detection times for model-predicted atmospheric moisture fingerprints in observational data

Noise	Fingerprint			
	Raw		Optimized	
	\bar{F}_{ALL}	\bar{F}_{ANTHRO}	$\bar{F}_{ALL}^*(t)$	$\bar{F}_{ANTHRO}^*(t)$
Mean retained				
$\bar{C}_{ALL}(t)$	2002	2002	1999	1999
$\bar{C}_{ANTHRO}(t)$	2002	2002	1999	1999
Mean removed				
$\tilde{C}_{ALL}(t)$	ND	ND	2000	2000
$\tilde{C}_{ANTHRO}(t)$	ND	ND	1999	1999

Detection times were calculated as described in *SI Text*. Results are given for both raw and optimized fingerprints and for analyses with the spatial mean included and removed. Detection times are shown for all four possible combinations of the fingerprints \bar{F}_{ALL} and \bar{F}_{ANTHRO} (and their optimized counterparts) and the noise data sets $\bar{C}_{ALL}(t)$ and $\bar{C}_{ANTHRO}(t)$. All optimized results are for a truncation dimension $m = 15$. Results are relatively insensitive to the choice of ALL or ANTHRO data for fingerprint or noise estimation. ND indicates that the fingerprint was not detectable before the end of the SSM/I record in 2006.

capture the effects of El Niño/Southern Oscillation (ENSO) variability on atmospheric moisture over the Pacific. The noise patterns resemble the leading EOF estimated from the SSM/I data (12). The observed pattern of W_0 changes corresponds more closely to the model fingerprints than to the dominant noise modes.^o

Even without optimization, and despite the short observational record length, the ALL and ANTHRO fingerprint patterns are consistently identifiable in the SSM/I data. Detection of a signal that is statistically significant at the 5% level occurs by 2002, after only 15 years of monitoring atmospheric moisture with SSM/I, and is insensitive to different analysis choices (Table 1). Optimization enhances the detectability of the fingerprint, yielding detection by 1999. The optimized fingerprints have their largest loadings off-equator (see *SI Fig. 7*), where the raw fingerprints have relatively high loadings (Fig. 4*A* and *B*) but the noise is relatively low (Fig. 4*C* and *D*).

A specific example of how we estimate detection time is given in Fig. 4*F* and in *SI Fig. 8*. This example shows that calculating trends over longer time intervals generally increases the S/N used to define detection time. The growth in S/N arises primarily from the progressive decrease in the standard error of the noise trends with longer trend length L .

To test whether positive identification of the model-predicted fingerprints is driven by the mean increase in W_0 (rather than by pattern correspondence at smaller spatial scales), we subtracted spatially averaged changes in W_0 from all data sets and repeated the entire detection analysis (see *SI Text*). Subtraction of spatial means leads to greater similarity between the fingerprints and the dominant noise modes and results in failure to identify the nonoptimized fingerprint in the observations (Table 1). Optimization of the “mean-removed” fingerprint rotates it away from high-ENSO noise directions and transforms this null result to detection by no later than 2000. Temporal filtering of all data sets to damp ENSO variability has a similar effect, and it yields detection of the

^oThe centered (spatial means removed) pattern correlations between the observed W_0 changes in Fig. 4*E* and the ALL and ANTHRO model fingerprints in Fig. 4*A* and *B* are 0.50 and 0.52, respectively. The corresponding values for the correlation between the observed W_0 changes and the leading ALL and ANTHRO model noise modes in Fig. 4*C* and *D* are 0.19 and 0.28. The noise modes were estimated by calculating EOFs from two pooled data sets (see *SI Text*) consisting of concatenated control run W_0 data from the ALL and ANTHRO models (26). Because the signs of the EOFs are arbitrary, only absolute values of the pattern correlation are given.

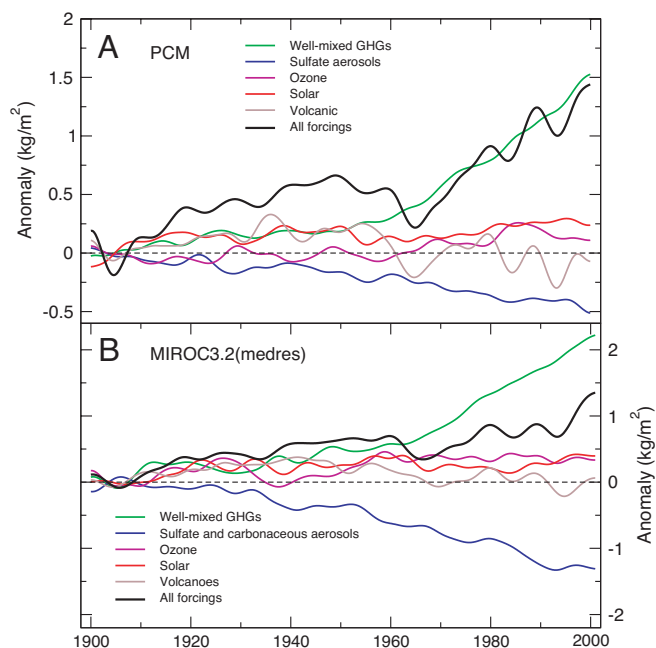


Fig. 5. Precipitable water changes in model single-forcing runs. Shown are column-integrated changes in monthly mean $\langle W_0 \rangle$ in experiments performed with the Parallel Climate Model (PCM) (28) (*A*) and the MIROC3.2(medres) model (29) (*B*). For each model, there are a total of six experiments. In the first five, climate forcings were varied individually according to estimates of their historical changes over the 20th century. The five forcings considered were changes in well mixed GHGs, anthropogenic aerosol effects, tropospheric and stratospheric ozone, solar irradiance, and volcanic aerosols. These forcings were varied simultaneously in the sixth experiment (ALL). In PCM, the anthropogenic aerosol forcing involves only the direct (scattering) effects of sulfate aerosols. The MIROC anthropogenic aerosol experiment considers forcing by both the direct and indirect effects of sulfate and carbonaceous aerosols (29) (see *SI Table 2*). All changes in $\langle W_0 \rangle$ were defined relative to climatological monthly means over 1900–1909. Results are ensemble averages and were decadal filtered ($K = 145$ months) to damp high-frequency noise (see *SI Text*). The ensemble size was 10 for the MIROC ALL integration and 4 for the PCM ALL experiment and for each MIROC single-forcing run (except the PCM volcanic forcing case, for which only two realizations were available).

mean-removed fingerprint even without optimization (see *SI Fig. 9*).^p

Single-Forcing Experiments

Although the W_0 fingerprints are highly similar in the ALL and ANTHRO experiments (Fig. 4*A* and *B*), and both fingerprints are identifiable in the SSM/I data, these results alone do not allow us to make reliable inferences about the relative contributions of anthropogenic and natural external forcing to the observed W_0 increase over 1988–2006. There are at least two reasons for this. First, the partitioning of the CMIP-3 20CEN results into ALL and ANTHRO groups does not cleanly isolate the effects of natural

^pOne further sensitivity test involved repeating our entire fingerprint analysis with patterns of percentage changes in W_0 . Anomalies in each individual data set (observations, 20CEN runs, and control integrations) were defined relative to the overall climatological annual mean of the data set and then converted to percentage changes. This procedure reduces the possible impact of model moisture biases on the estimated signals and noise. Fingerprint patterns are more uniform, because per degree Celsius increase, the percentage change in W_0 is much closer to being a constant than is the actual change in W_0 , which increases rapidly with increasing temperature. When spatial means are included, the use of percentage changes yields positive and consistent detection of an anthropogenic fingerprint, with detection times similar to those shown in Table 1 for actual changes in W_0 . Because the “percentage change” fingerprint is spatially more uniform than the fingerprints shown in Fig. 4*A* and *B*, it is less meaningful to explore the detectability of a mean-removed fingerprint.

